

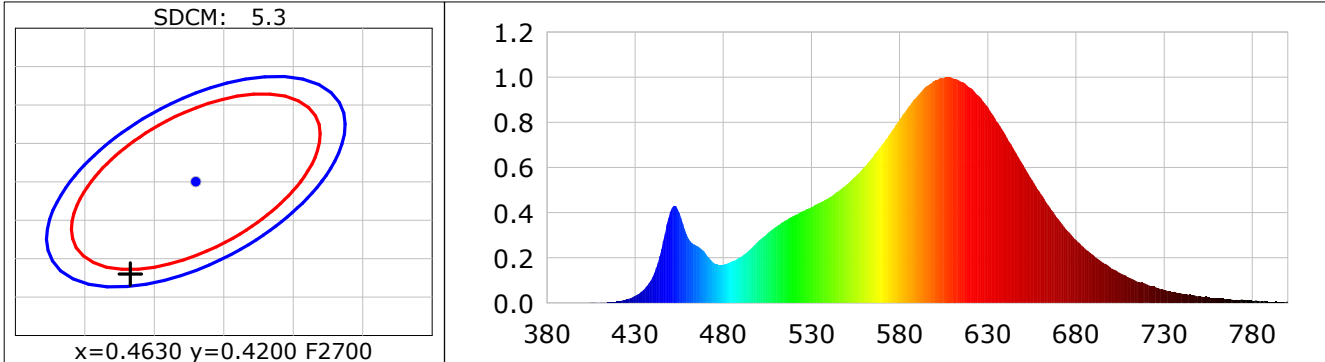
Lightsource Test Report

Product Infomation

| | |
|-------------------------------|-------------------------|
| Product Category: LED STRIP | Product Type: LED STRIP |
| Product Spec: VOLX 12 | Product Number: 274 |
| Manufacturer: TECSOLELED S.L. | Buyer: TECSOLELED S.L. |

CIE Colorimetric Parameters

Chromaticity coordinates: $x=0.4583$ $y=0.4080$ $u(u')=0.2627$ $v=0.3507$ $v'=0.5261$
 CCT: $T_c=2702K$ ($duv=-0.00084$) Color Ratio: $R=0.253$ $G=0.724$ $B=0.024$
 Peak Wavelength: 606.4nm Half Bandwidth: 112.6nm
 Dominant Wavelength: 584.5nm Color Purity: 0.600
 CRI: $R_a=82.6$, $avgR(1\sim14)=78.0$, $avgR(1\sim15)=77.7$ TM30: $R_f=85$, $R_g=95$
 GAI: $GAI_BB_8=95.7$, $GAI_BB_15=103.9$, $GAI_EES=46.5$
 R1 =82 R2 =93 R3 =94 R4 =80 R5 =83 R6 =93 R7 =80 R8 =57
 R9 =8 R10=84 R11=80 R12=77 R13=84 R14=98 R15=73
 Color Quality Scale: $Q_a=82.6$, $Q_f=84.8$, $Q_p=84.6$, $Q_g=90.6$
 Q1 =78 Q2 =93 Q3 =85 Q4 =81 Q5 =84 Q6 =84 Q7 =84 Q8 =85
 Q9 =94 Q10=91 Q11=87 Q12=84 Q13=82 Q14=72 Q15=74



Photometric Parameters

Luminous Flux: 1004.3 lm Efficiency: 121.06 lm/W Radiant Power: 3.093 W
 Total mains efficacy: 112.10 lm/W Energy Efficiency Class: E (EU 2019/2015)

Electric Parameters

Voltage: 12.000V Current: 0.6914A Power: 8.30W
 Power Factor: 1.0000 Frequency: 0.00Hz

Test Infomation

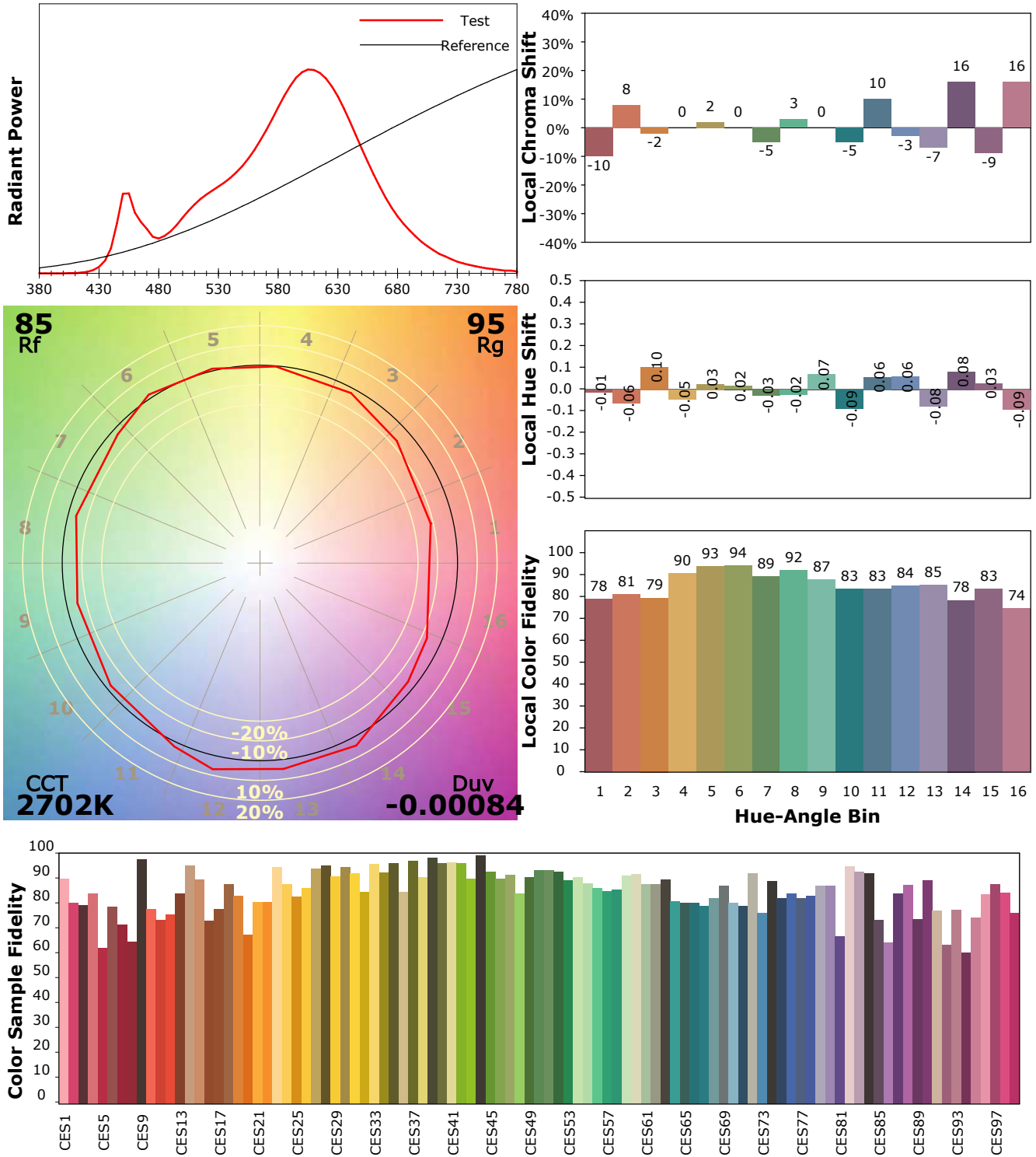
Scan Range: 380~800:1nm Photometric Method: sphere-spectroradiometer
 Stabilization Time: 20 Sec ALC.: 1.0000 Photometric Condition: Sphere diameter: 1.50m, 4PI
 Max of Signal: 45794 (2215) CCD Integration Time: 662.71 ms

IES TM-30-18 Color Rendition Report

Product Information

Product Category: LED STRIP
 Product Spec: 21059602440580
 Manufacturer: TECSOLED S.L.

Product Type: LED STRIP
 Product Number: 274
 Buyer: TECSOLED S.L.



Condition: Tx:19.1'C, Ti:18.5'C, R.H.:60%
 Test Lab: TECSOLED S.L.
 Operator: JORDAN GIL DIAZ

Test Device: Inventfine CMS-2S (Plus)
 Test Time: 2021-10-29 10:36:23
 Inspector: